

donate **recycle** don't throw away



The average U.S. citizen throws away **70 lbs.** of clothing each year

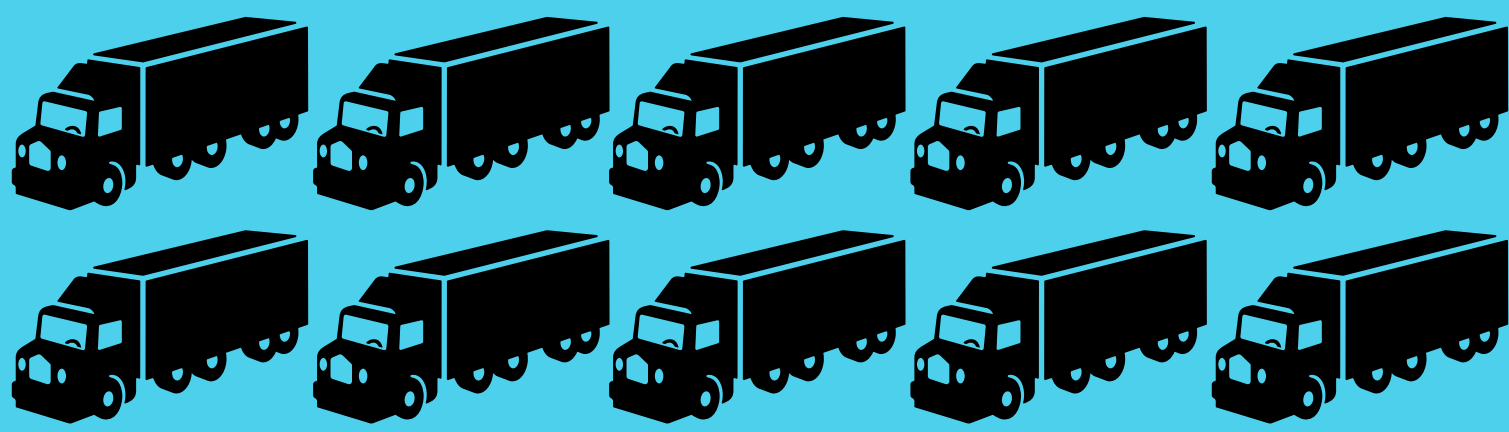
70

95% of textiles **WORN OR TORN** can be recycled

yet only **15%** gets donated or recycled

85%
[70 lbs. per person] goes to our landfills

That amount is equal to **21 BILLION LBS.** or 260,000 truckloads



SMART members recycle **3.8 BILLION LBS.** of textiles each year



\$100 MILLION

Amount of funding generated for charities from second-hand clothing sales



Since 1932

SECONDARY MATERIALS®
AND RECYCLED TEXTILES

The Association of Wiping Materials, Used Clothing and Fiber Industries

donate recycle don't throw away®



A PROGRAM OF SMART THE SECONDARY MATERIALS AND RECYCLED TEXTILES ASSOCIATION

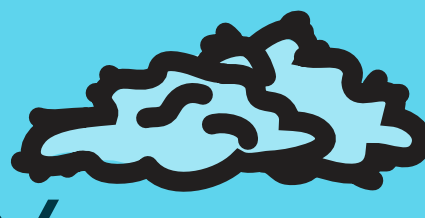
the secret double life of donated textiles

NEARLY **100%** OF DONATED TEXTILES ARE RECYCLED! They are separated into three grades:

45%
USABLE CLOTHING



20%
FIBER CONVERSION GRADE



30%
WIPING CLOTH GRADE



Recycled fiber products **SAVE MONEY and RESOURCES** by using existing materials.

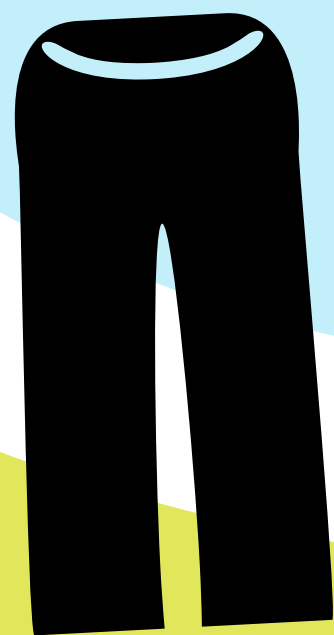


CLOSING THE LOOP

Recycled cloth rags use **LESS WATER, LESS ENERGY** and create a **LOWER CARBON FOOTPRINT** than all other alternatives.



The second hand clothing market provides **AFFORDABLE CLOTHING** to those in need and **ENCOURAGES GLOBAL ENTREPRENEURSHIP.**



SECOND LIFE ...



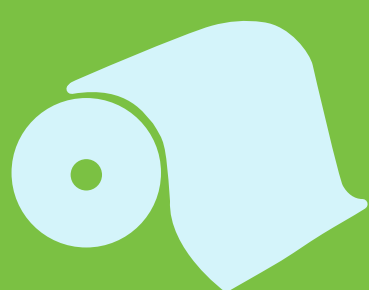
stained t-shirt → wiping cloth



lone sock → pillow stuffing



old denim → household insulation



teddy bear → car seat stuffing



car seat stuffing



torn bath towel → wiping cloth



SECONDARY MATERIALS®
AND RECYCLED TEXTILES

The Association of Wiping Materials, Used Clothing and Fiber Industries

donate recycle don't throw away®



A PROGRAM OF SMART THE SECONDARY MATERIALS AND RECYCLED TEXTILES ASSOCIATION